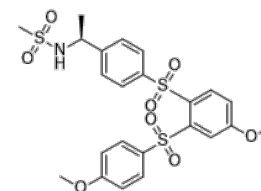


Product Name : SCH225336
Cat. No. : PC-22211
CAS No. : 447459-51-0
Molecular Formula : C₂₃H₂₅NO₈S₃
Molecular Weight : 539.63
Target : Cannabinoid Receptor
Solubility : 10 mM in DMSO



CAS: 447459-51-0

Biological Activity

SCH225336 (SCH336) is a potent, selective cannabinoid receptor CB2 inverse agonist with K_i of 0.4 nM, >2000-fold selective over CB1 receptor.

References

Gonsiorek W, et al. J Biol Chem. 2006 Sep 22;281(38):28143-51.

Brian J Lavey, et al. Bioorg Med Chem Lett. 2005 Feb 1;15(3):783-6.

Caution: Product has not been fully validated for medical applications. Lab Use Only!

E-mail: tech@probechem.com